

Corners to be Indexed

NE 14-107-43
 E1/4 14-107-43
 N1/4 14-107-43

STATE OF MINNESOTA, } ss.
 COUNTY OF MURRAY, }

I hereby certify that the within Instrument was filed in this office for record on the 5TH day of FEBRUARY A.D. 20 19 at 9:00 o'clock A. M., and was duly recorded as Document No. _____

I hereby certify that this document and the data contained herein was prepared by me or under my direct supervision

[Signature]

1/31/2019
 Date

Lucy C. Larson
 County Recorder

Daniel L. Bueltel

License No. 43844

CERTIFICATE OF LOCATION OF GOVERNMENT CORNER

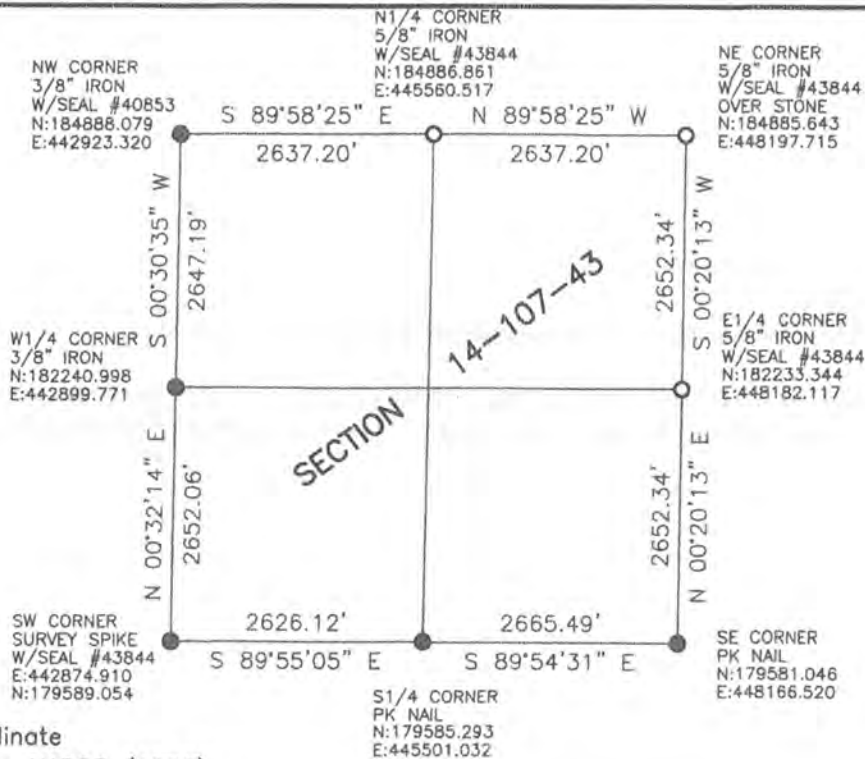
Land survey monuments situated in Section 14, Township 107, Range 43, 5TH P.M.

STATE OF MINNESOTA, County of MURRAY

STATEMENT OF EVIDENCE:



- FOUND MONUMENT
- SET MONUMENT



Minnesota State Plane Coordinate
 System Murray County Datum NAD83 (1996)

Statement of Evidence

NE 14-107-43

In 1866, J.W. Bishop did the original subdivision of the township.

No Date, F.H. March shows a stone at the corner.

On July 26, 2018, Bueltel-Moseng Land Surveying dug with a backhoe and found a 12" pointed field stone. We set a 5/8" iron with seal #43844 on the south side of the stone and a 5/8" iron with seal #43844 over the stone. It is in the center of the north and south road and in the approximate center of the field roads to the east and west.

E1/4 14-107-43

In 1866, J.W. Bishop did the original subdivision of the township.

No Date, F.H. March shows a stone at the corner.

On July 26, 2018, Bueltel-Moseng Land Surveying dug with a backhoe and found nothing. We set a 5/8" iron with seal #43844 midway and online between the section corners. It is in the center of the road and in line with the fences to the east and west.

N1/4 14-107-43

In 1866, J.W. Bishop did the original subdivision of the township.

On July 26, 2018, Bueltel-Moseng Land Surveying set a 5/8" iron with seal #43844 midway and on line between the section corners. It is in the center of the field road.